

**AutoSec ATS2** (Fixed Wing)  
**Motorised Security Revolving Door for Internal Installation**



**Technical Specification**

<b>Unit Dimensions</b>	Outside Diameters:	2000 or 1850 or 1700mm
	Ceiling Height:	2100mm
	Cornice Height:	300mm
	Overall Unit Height:	2400mm
<b>Drive:</b>	Motorised	
<b>Orientation:</b>	Bi directional passage from both directions simultaneously.	
<b>Materials:</b>	Frame and Cornice:	Aluminium section powder coated Finished Silver RAL 9006
	Frame Glazing:	8.2mm 3 ply laminated safety glass
	Rotor Wings:	Aluminium frame, finished Silver RAL 9006, with 11.4mm 3 ply structural toughened and laminated safety glass.
	Ceiling:	Painted MDF finished Silver RAL 9006
<b>Function:</b>	Passage in both directions, electronically controllable.	
<b>Method of Operation:</b>	On receiving a signal from the access control system or push button, the door wings will rotate through 180°. Receipt of further authorised signals will continue uninterrupted rotation.	
<b>2<sup>nd</sup> Quadrant Entry:</b>	Should the authorised user not use the first available quadrant the AutoSec will allow valid entry through the next quadrant.	
<b>Automatic Reversing:</b>	To enforce both security and safety by rejecting potential unauthorised users and avoid entrapment.	
<b>Anti Tailgating:</b>	Prevents unauthorised passage from the opposite direction whilst a valid passage is being made in the other direction. This is achieved via 8N° ** thermal infrared sensors located in the ceiling that continuously monitor all four door quadrants.	
<b>Tamper:</b>	An output alarm is generated should any attempt be made to interfere physically with the operation of the door. (15 seconds accumulative time)	
<b>Safety:</b>	The door is fitted with adjustable torque sensing for the forward and reverse directions.	
<b>Power Failure:</b>	The wings will rotate through 45° only to the crucifix position via an inbuilt battery back up (BBU), stop and become inactive. The door will remain in this position until power is restored.	
<b>Fire Alarm:</b>	The wings will rotate through 45° only to the crucifix position via an inbuilt battery back up (BBU), stop and become inactive. The door will remain in this position until power is restored.  A normally closed (NC) signal is required from others to effect this state.	
<b>Interface:</b>	Momentary Zero Volt (0V) normally open (NO) signal provided by either card reader or push button input of duration between 0.5 and 1.0 second.  The AutoSec is controlled via a microprocessor that also offers card reader inhibits, reset, and passage confirmation as standard.	

**Product Description**

AutoSec, the premium security model in our Control range, combining high aesthetics with material choices.

It offers the highest possible level of personnel control, many security features and ease of use.

AutoSec is an essential door to create a secure yet impressive entrance to any building.

With the development of the all new ATS2 comes an increase in the glazing area making it an unobtrusive full security revolving door.

**Users include**

- Government
- Banks
- Police HQ's
- Security Printers
- Finance
- Telecommunications
- IT Facilities
- Petrochemical



- Walkway Downlights:** 4N<sup>o</sup> recessed low voltage halogen down lights are positioned within the ceiling over each quadrant.
- Servicing:** Via removable ceiling panels in the walkway ceiling or from overhead. The controller should always be positioned on the secure side of the installation.
- Power Supply Voltage:** 115/230 VAC 50/60Hz
- Power Rating:** 750 VA
- Logic Voltage:** 24vDC
- Installation Details:** The AutoSec is delivered in kit form, which may require lifting equipment to off load.
- Approximate Weight:** 600Kg

## Models Available

### AutoSec Motorised Security Revolving Door Fixed Wing.

- Model ATS2 1700 1700 dia. overall footprint.
- Model ATS2 1850 1850 dia. overall footprint.
- Model ATS2 2000 2000 dia. overall footprint.

## Accessories and Optional Extras

### Access Control Facilities:

- Card reader mounting box
- Push button mounting box c/w push button
- Simple remote override console to control both, or either, entry and exit for visitor access.

### Switchable Day / Night Mode:

- Day mode allows free access through the door from presence sensing via a non-security PIR detector. The door will rotate on an input from the sensor and continue as long as the person is detected. (No security)
- Night mode puts the door back into access control mode. (Full security)

### Optional Finishes:

- Alternative finishes and colours
- 11.4mm 5 ply anti bandit glass
- Tinted glass

### Status Lights:

- LED Badge / Red Cross / Green Arrow displays

### Uninterrupted Power Supply:

- UPS is located remotely and will have the ability to keep the AutoSec operating continuously in its normal operating mode for a period of one hour after the mains power has failed.

### Floor Mat:

- Dimpled rubber with a straight threshold strip between the uprights

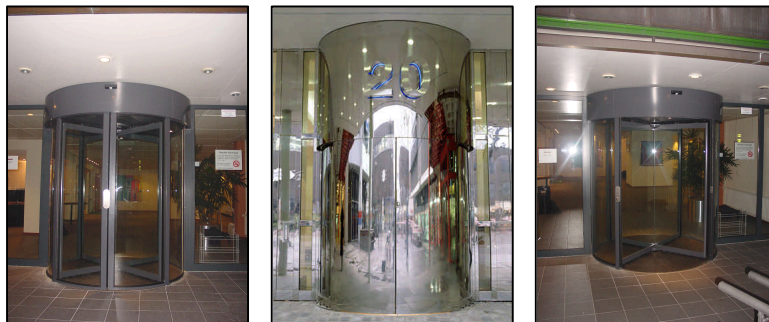
### Night Shutter:

- Glazed manually operated to close and lock the exposed quadrant during night time hours

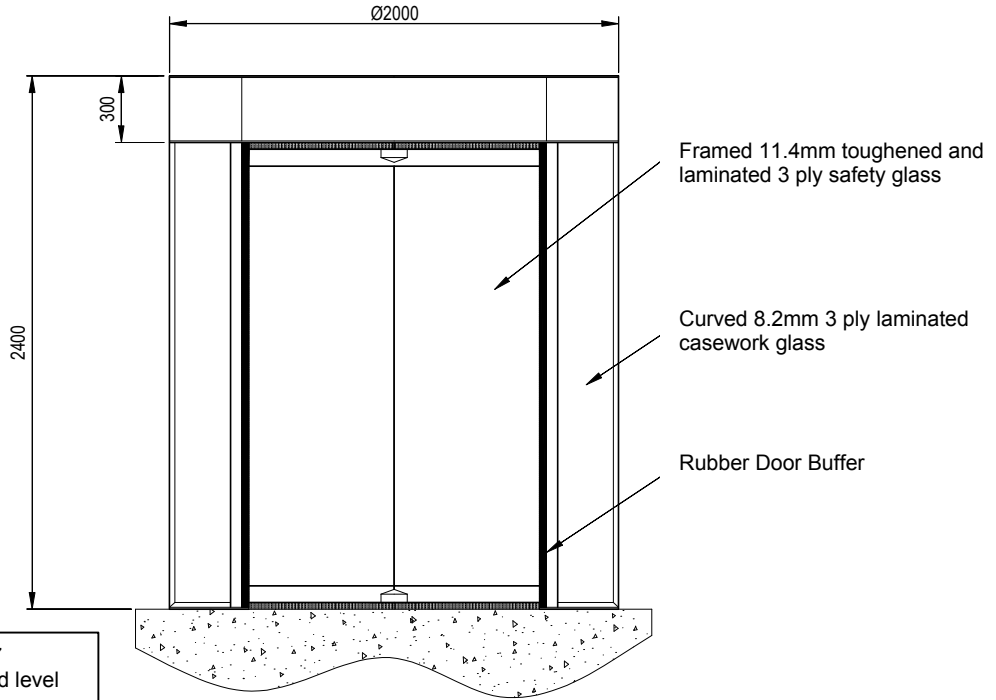
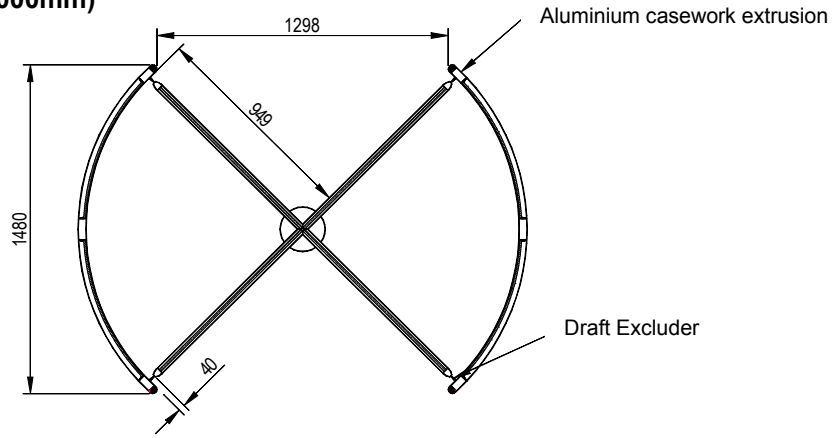
### Increased Cornice:

- The height of the cornice can be extended to fill a gap above the door.

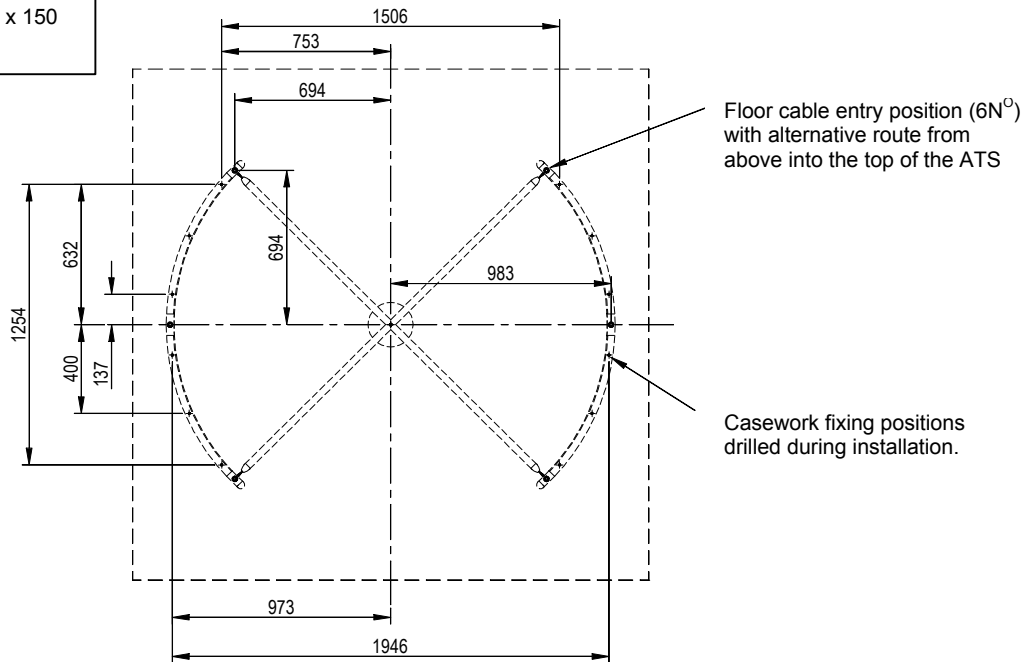
## Installation Examples



**Standard Site Preparation (2000mm)**



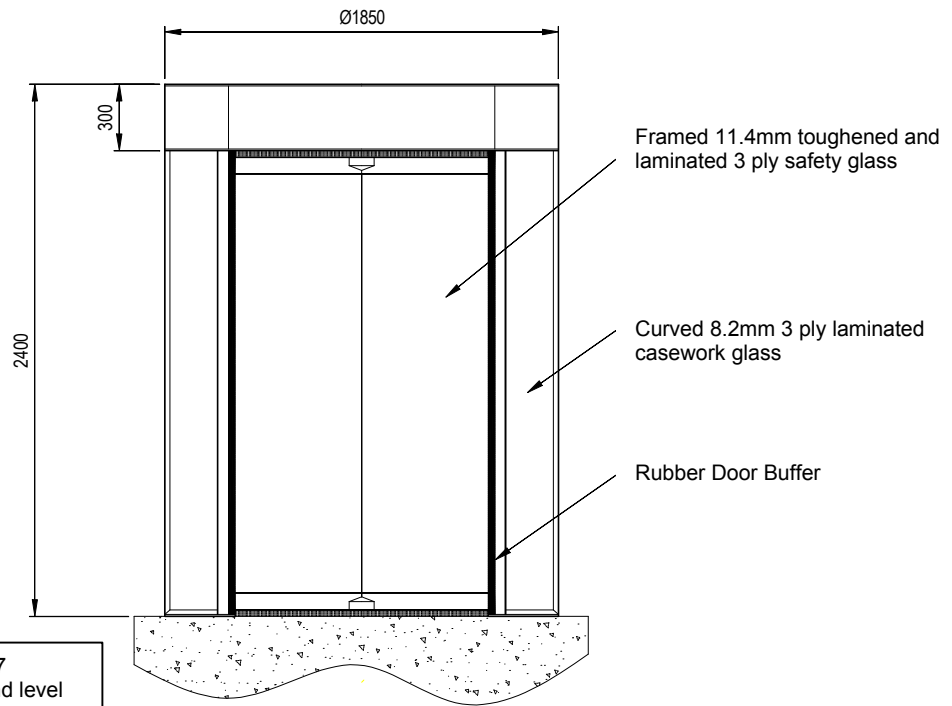
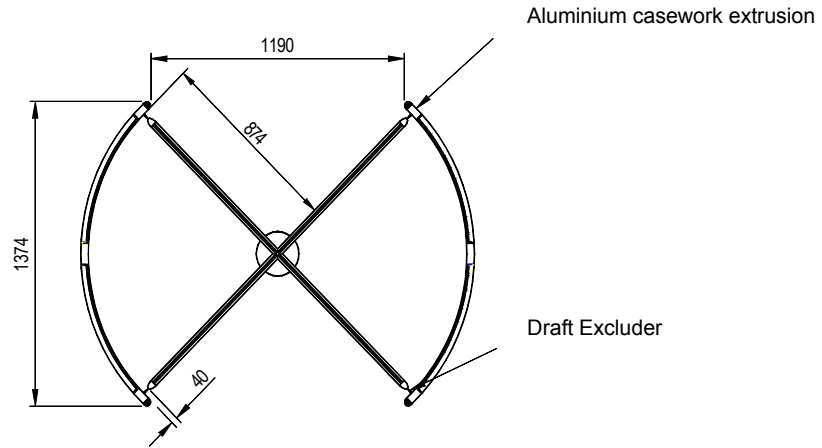
Concrete Base to BS 5328:1997 specification. Base to be flat and level to +/- 5mm over footprint area. Dimensions to be > 2300 x 2300 x 150 deep min.



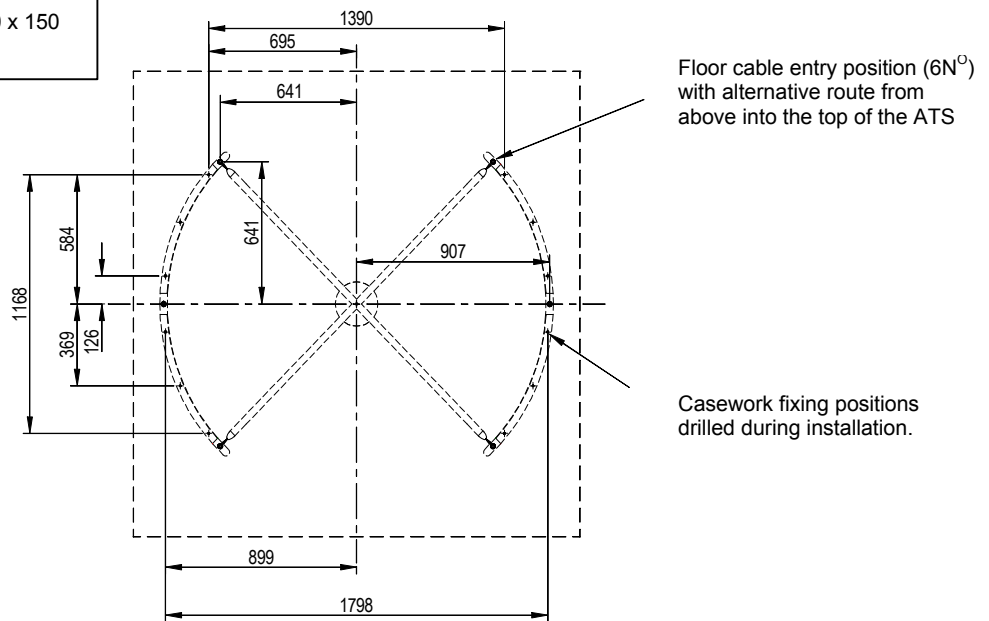
**IMPORTANT**

- Any horizontal pipe or conduit runs below the AutoSec must be at least 140mm below FFL.
- It is the customers responsibility to ensure the structural integrity and strength of the installation location.

**Standard Site Preparation (1850mm)**



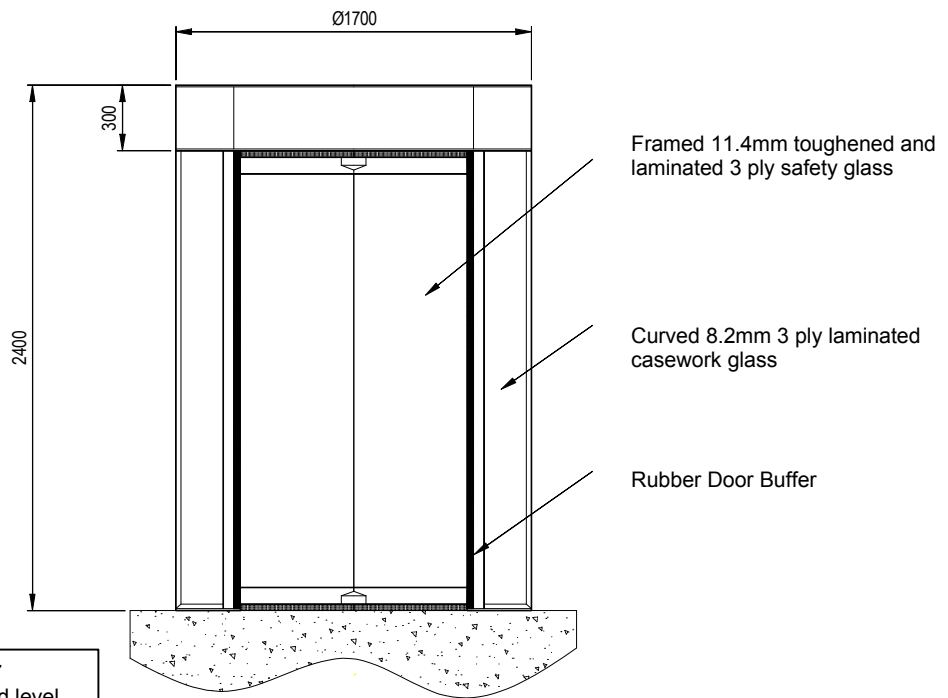
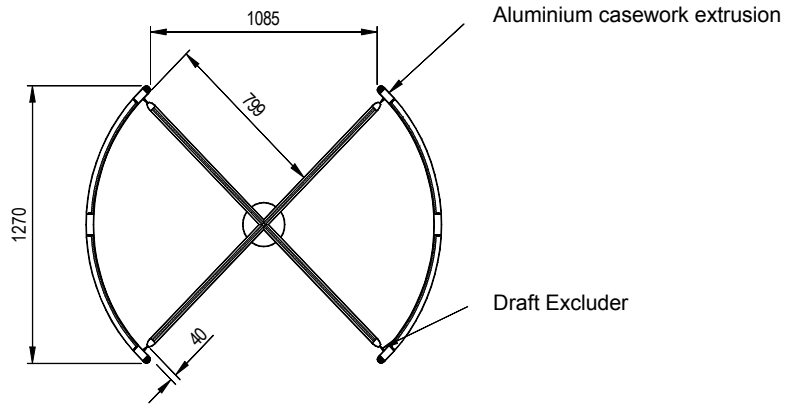
Concrete Base to BS 5328:1997 specification. Base to be flat and level to +/- 5mm over footprint area. Dimensions to be > 2100 x 2100 x 150 deep min.



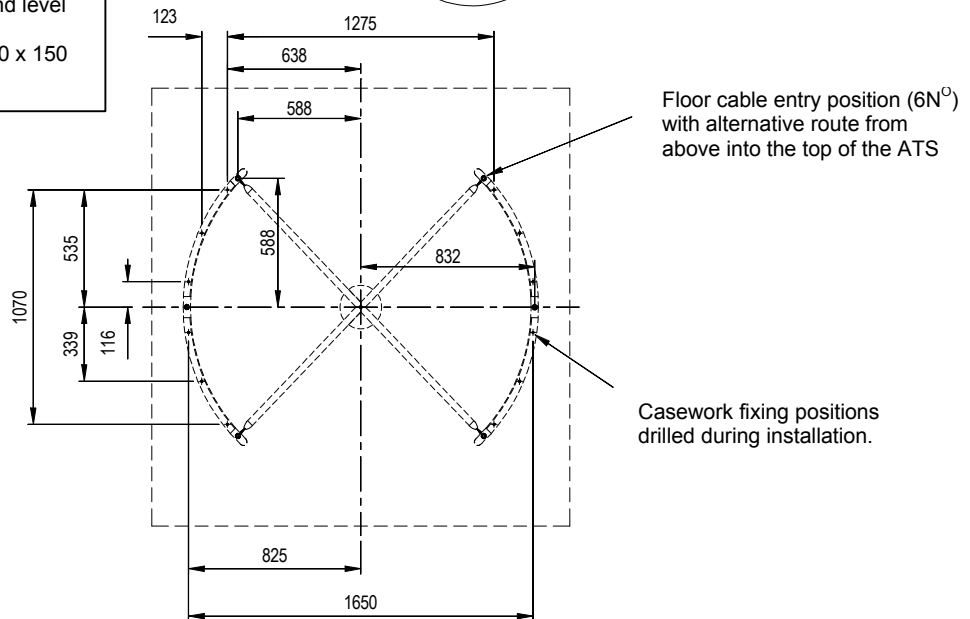
**IMPORTANT**

- Any horizontal pipe or conduit runs below the AutoSec must be at least 140mm below FFL.
- It is the customers responsibility to ensure the structural integrity and strength of the installation location.

**Standard Site Preparation (1700mm)**



Concrete Base to BS 5328:1997 specification. Base to be flat and level to +/- 5mm over footprint area. Dimensions to be > 2000 x 2000 x 150 deep min.



**IMPORTANT**

- Any horizontal pipe or conduit runs below the AutoSec must be at least 140mm below FFL.
- It is the customers responsibility to ensure the structural integrity and strength of the installation location.

# **GUNNEBO**

## **ENTRANCE CONTROL**

### **United Kingdom**

Gunnebo Entrance Control Ltd. Bellbrook Business Park, Uckfield, East Sussex, TN22 1QQ.  
Tel +44 (0) 1825 761022 Fax +44 (0) 1825 763835

[www.gunneboentrance.com](http://www.gunneboentrance.com)

Note: In pursuit of its policy of continuous refinement and improvement, Gunnebo Entrance Control Ltd reserves the right to modify design and details.

#### **A COMPANY WITHIN THE GUNNEBO GROUP .....**

#### **HEAD OFFICE SWEDEN**

Gunnebo Entrance Control AB, 590 93 Gunnebo, Tel +46 (0) 490 890 00, Fax +46 (0) 490 23889

**DENMARK** Gunnebo Protection A/S  
Division Entrance Control  
Erhvervsparken 3, DK-4621 Gadstrup  
Tel +45 46 19 14 66  
Fax +45 46 19 14 55

**FRANCE** Gunnebo Entrance Control SARL  
Zone d'Activites Le Mandinet,  
20 Rue des Campanules  
F-77185, Lognes  
Tel +33 (0) 1 64 80 14 40  
Fax +33 (0) 1 64 80 14 39

**GERMANY** Gunnebo Entrance Control GmbH  
Diagonalstrasse 41, D-20537  
Hamburg  
Tel +49 (0) 40 47 11 30 0  
Fax +49 (0) 40 47 11 30 79

**HONG KONG** Gunnebo Entrance Control  
Room 2312, C.C. Wu Building,  
302-308 Hennessy Road, Wanchai.  
Tel +852 2882 8337  
Fax +852 2523 7880

**ITALY** Gunnebo Entrance Control SpA  
Via A Volta 15 - IT 38015  
Lavis (TN)  
Tel +39 0461 248 900  
Fax +39 0461 248 999

**NORWAY** Gunnebo Troax A/S  
Division Entrance Control  
Postboks 179, Kalbakken N-0903, Oslo  
Tel +47 22 80 42 00  
Fax +47 22 80 42 01

**SPAIN** Gunnebo Entrance Control SL  
BBC, Comte d'Urgel 143, lola 08036,  
Barcelona  
Tel +34 93 452 59 56  
Fax +34 93 451 56 53

**SWEDEN** Gunnebo Entrance Control  
Box 500, Kumla Gardsvag 33F, 145 63  
Norsborg  
Tel +46 (0)8 53 17 15 75  
Fax +46 (0) 8 53 18 85 39

**UNITED KINGDOM** Gunnebo Entrance Control Ltd  
Bellbrook Business Park, Uckfield,  
East Sussex, TN22 1QQ  
Tel +44 (0) 1825 761022  
Fax +44 (0) 1825 763835

**USA** Gunnebo Omega Inc  
535 Getty Court, Suite F, Benicia  
California, CA 94510  
Tel +1 707 748 0885  
Fax +1 707 745 6020