

**Cantilevered Sliding Gate SG1**  
Road Traffic Sliding Gate

**Technical Specification**

- Drive:** Motorised
- Materials:** The sub frame consists of shaped profiled steel carrier 190/155/5 in section.
- The main frame is constructed of RHS steel:
- Bottom, top and side spars 80/60/3 in section
  - Infill 30/30/2 in section (120mm apart)
  - Gate pillars and slam post 140/140/5 in section



Two guide rollers running on bearings are mounted on a bridge between the pilot posts for lateral support.

The rollers run against a light alloy strip on the upper spar to prevent wear.

The slamming post has a welded on adjustable run-up plate and gate run-in fork.

The rear gate-stop post also has an adjustable run-up plate and rubber buffer.

The C-shaped steel sub-frame runs uniformly and precisely on two adjustable roller units each with twin roller bearings.

The drive column consists of a welded steel construction clad in sheet steel and has an integral access door with safety lock.

The drive unit and control panel are both housed inside the drive column.

**Finish:** The gate is protected with a high quality galvanised coating (80mu) and sealed with silver lacquer RAL 9006. Additional anti-corrosion protection through a subsequent duplex powder-coating may be provided at additional cost. Thickness of coating is 180mu.

In RAL standard colours:

- Green RAL 6005
- Grey RAL 7023
- Brown RAL 8014
- White RAL 9010

**Height:** 1250mm - 2450mm

**Width:** 2000mm - 16000mm

**Function:** Passage in both directions electronically controllable.

**Mechanism:** The drive unit is a 220/380V, 50Hz, maintenance free heavy duty motor with worm gear drive and built in electro-magnetic brake.

The output is determined by the gate size. The motor powers a chain drive, via a flexible coupling and drive sprocket.

The chain runs smoothly and slip-free in the C-formed sub frame at 180° over the drive sprocket.

Drive shut-off in the open and closed positions is achieved by means of adjustable proximity switches.

Circuit clamping is activated when the gate is fully closed.

**Product Description**

Gunnebo Mayor Sliding Gates are designed for use in situations where it is imperative that unauthorised vehicles are stopped or where barriers do not provide a high enough deterrent.

**Users include**

- British Gas
- Lansing Linde
- TXU
- Royal & Sun Alliance
- Yorkshire Water



**Safety System:**

- Safety pressure strips, mounted on light alloy C-shaped rails.
- All potential crushing zones are electronically monitored.
- Switching is achieved via a steel wire, mounted inside the sub frame using the static current technique.
- The safety system is self regulating and conforms fully to the regulations for powered gates.

**Power Failure:** Emergency drive release due to power failure is possible by disengaging the worm gear by hand.

**Fire Alarm:** Input facility available for 0V contact supplied by others to drive the gate open in the event of an emergency.

**Interface:** The control panel accepts all forms of access control, loop detectors, push buttons, radio transmitter, overrides etc.

**Outputs:** Gate closed contacts which will be Common, Normally-open/Normally-closed, Volt-free, changeover contacts.

**Operating Speed:** Approx 200mm/sec.

**Power Supply:** 220V, 50Hz, 1Ph or 380V, 50Hz, 3Ph.

**Power Rating:** 10 amp fused.

**Logic Voltage:** 24V DC

**Delivery:** The gate is delivered fully assembled and shall require lifting gear for off loading.

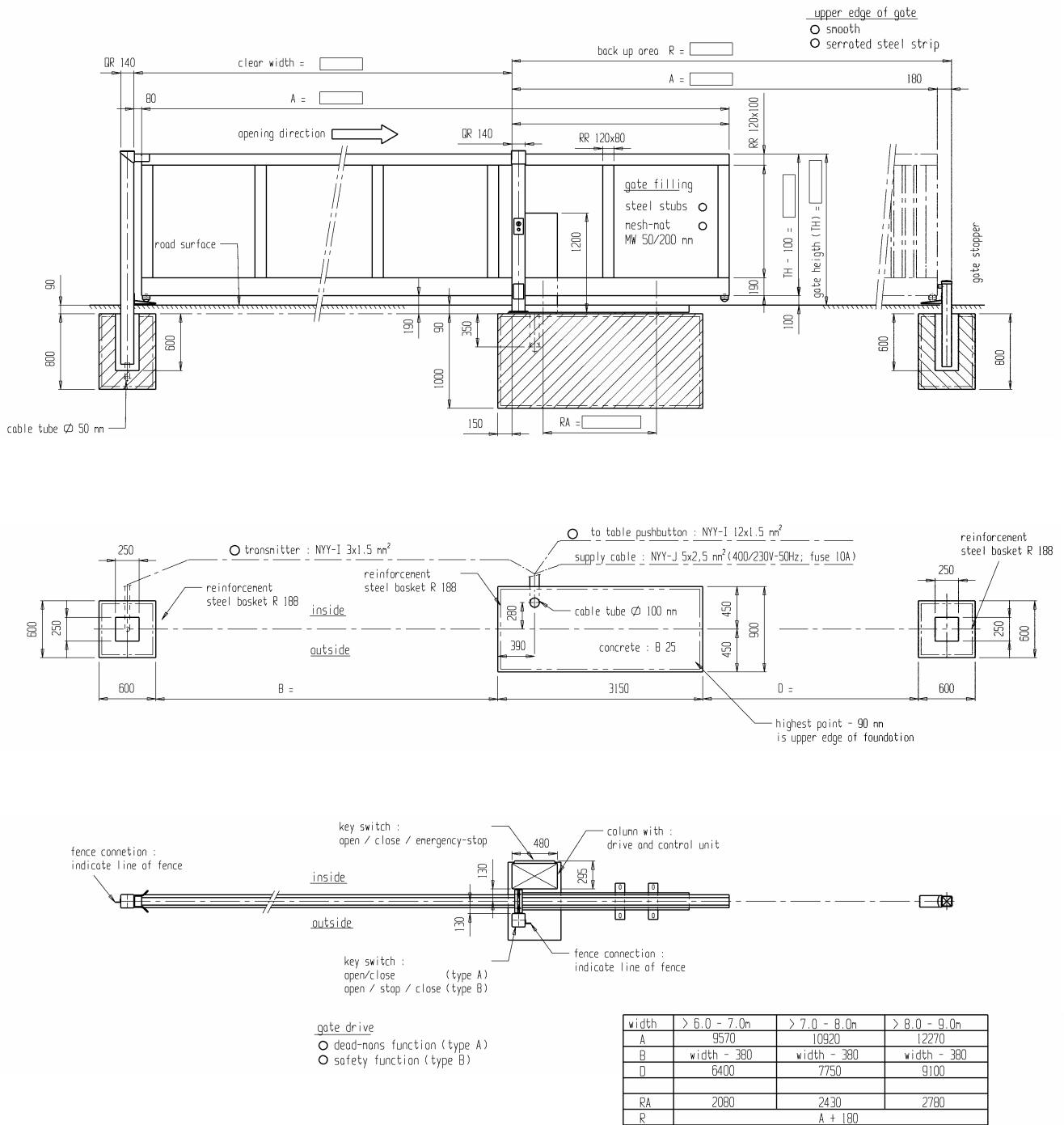
**Gunnebo Mayor also produce a range of :**

- Motorised Telescopic Sliding Gates
- Motorised Hinged Gates

**Standard Accessories and Optional Extras**

- Remote Push Button Console
- Free entry or free exit roadway induction loops
- Safety roadway induction loop installed either side of Sliding Gate
- Card reader pedestals (Card readers customer supplied)
- Intercom pedestals (Intercom customer supplied)
- Red Green traffic lights

# Site Preparation Sliding Gate SG1



## Safety Note

- The majority of installations use a system of induction loops for safety and/or activating the opening and closing of the sliding gate. They identify a change in the magnetic field of the loop circuit when a metallic presence is detected, however with a modern vehicle construction it is not always possible to detect their presence. It is therefore recommended that additional safety must be considered for lorries, motor bikes and trailers etc.

Please consult Gunnebo Mayor Technical Department for further assistance.

# GUNNEBO MAYOR

ENTRANCE CONTROL SOLUTIONS

## United Kingdom

Gunnebo Mayor Ltd. Bellbrook Business Park, Uckfield, East Sussex, TN22 1QQ.  
Tel +44 (0) 1825 761022 Fax +44 (0) 1825 763835

Gunnebo Mayor Ltd. Orient House, Newton Street, Hyde, Cheshire, SK14 4RX  
Tel +44 (0) 161 882 5900 Fax +44 (0) 161 882 5910

[www.gunnebomayor.com](http://www.gunnebomayor.com)

*Note: In pursuit of its policy of continuous refinement and improvement, Gunnebo Mayor Inc. reserves the right to modify design and details.*

## A COMPANY WITHIN THE GUNNEBO GROUP.....

### HEAD OFFICE SWEDEN - Gunnebo Entrance Control AB, SE-590 93, Gunnebo.

Tel +46 (0) 490 89000, Fax +46 (0) 490 23889

**DENMARK** Gunnebo Protection A/S  
Division Entrance Control  
Erhvervsparken 3, DK-4621 Gadstrup  
Tel +45 46 19 14 66  
Fax +45 46 19 14 55

**FRANCE** Gunnebo Entrance Control SARL  
Zone d'Activites Le Mandinet,  
20 Rue des Campanules  
F-77185, Lognes  
Tel +33 (0) 1 64 80 14 40  
Fax +33 (0) 1 64 80 14 39

**GERMANY** Gunnebo Entrance Control GmbH  
Diagonalstrasse 41, D-20537  
Hamburg  
Tel +49 (0) 40 47 11 30 0  
Fax +49 (0) 40 47 11 30 79

**HONG KONG** Gunnebo Entrance Control  
Room 2312, C.C. Wu Building,  
302-308 Hennessy Road, Wanchai.  
Tel +852 2882 8337  
Fax +852 2523 7880

**ITALY** Gunnebo Italdis SpA  
Via A Volta 15 - IT 38015  
Lavis (TN)  
Tel +39 0461 248 900  
Fax +39 0461 248 999

**NORWAY** Gunnebo Troax A/S  
Division Entrance Control  
Postboks 179, Kalbakken N-0903, Oslo  
Tel. +47 22 80 42 00  
Fax +47 22 80 42 01

**SPAIN** Gunnebo Entrance Control  
BBC, Comte d'Urgel 143, lola 08036,  
Barcelona  
Tel +34 93 452 59 56  
Fax +34 93 451 56 53

**SWEDEN** Gunnebo Entrance Control  
Box 500, Kumla Gardsvag 33F, 145 63  
Norsborg  
Tel +46 (0)8 53 17 15 75  
Fax +46 (0) 8 53 18 85 39

**UNITED KINGDOM** Gunnebo Mayor Ltd  
Bellbrook Business Park, Uckfield,  
East Sussex, TN22 1QQ  
Tel +44 (0) 1825 761022  
Fax +44 (0) 1825 763835

**USA** Gunnebo Omega Inc  
5056 Commercial Circle, Suite E,  
Concord, California, CA 94520  
Tel +01 925 609 6339  
Fax +01 925 603 0810