

Product Sheet

**Full - O - Stile AT91
Manual security Turnstile**

Full - O - Stile AT91 is available in two configurations: single (FOS AT91S); double (FOS AT91D).

Technical Specification

Unit Dimensions : Outside Dimensions :

FOS AT91S	1480 x 1480mm
FOS AT91D	2200 x 1480mm
Ceiling Height	1990mm
Cornice Depth	1990mm
Overall Height of Unit	2244mm

Rotor Elements: 4N^o rotor wings (90°)

Drive: Hand operated

Orientation: Pass Left or Pass right

Materials: Casework: 360 B steel RILSANTM corrosion proofing treated. Standard RAL 7032.
Rotor Wings: 360 B steel RILSANTM corrosion proofing treated. Standard RAL 7032.
Rotor Spindle: Tubular 360 B steel RILSANTM corrosion proofing treated. Standard RAL 7032.

Function: Passage in both directions, electronically controllable.

Mechanism: Control of the FOS AT91 operation is achieved by an electro-mechanical head mechanism located in the roof drum of the FOS AT91. It is silent in rotation and comprises the following standard features:

- A positive action lock which prevents two passages at one time
- A Self centering mechanism to ensure complete rotation of the head to the rest position.
- An anti backup device prevents reverse rotation once the head has moved 30° from its rest position.
- A hydraulic damper to ensure smooth and quiet operation

Operating Modes: The mechanism can be configured to operate in two standard modes.

- Normally Closed – The mechanism is locked until a valid authorisation signal is received.
- Normally Open – The mechanism is permanently unlocked and will only lock if passage is attempted without a valid authorised signal. In this mode the MTBF is increased from 1.5 to 2.5 million cycles and increases passage throughput speeds.

Power Failure: In the event of an emergency or isolation of power supply, unit may be configured to fail-safe i.e. rotor freely rotates or fail-lock i.e. rotor locks. Either option is available in both or one direction. Choice must be denoted at time of order placement.

Note -Head mechanism fail state will be the same as power failure choice.

Interface: The mechanism is controlled by means of a LCM02 microprocessor control logic with the following features :

- One input for opening/locking the mechanism in each direction.
- Two protected outputs for control of the opening/locking solenoids.
- Four protected outputs for piloting way mode indicators.
- Two 0V output relays indicating availability of use in either direction.
- Two 0V outputs to count passage in either direction.

Unit has an adjustable time out facility if required i.e. Go signal will be cancelled if passage through turnstile is not completed within pre-set time. The standard default is 8 seconds adjustable via parameter change. Additional detailed information is available upon request.



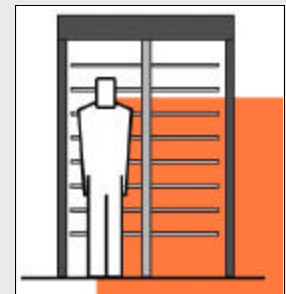
Product Description

Engineered for outdoor high-security areas, the FOS AT91 is intended for applications requiring a high-performance turnstile with a basic design and a convenient price.

Users include

- Government
- Retail
- Finance
- Telecommunications
- Information Technology
- Banking
- Publishing
- Leisure
- Petrochemical
- Pharmaceutical
- Education

FULL-HEIGHT TURNSTILES



Servicing:	From top of the roof	
Power Supply	115/230 Volts AC 50/60 Hz	
Power Rating:	FOS AT91S	50VA
	FOS AT91D	100VA
Logic Voltage:	24 Volt DC	
Installation Details:	Full - O - Stile AT91 models are delivered as one piece, which may require lifting gear for off loading. Approx. weight (depending on spec.) : FOS AT91S 350 kg. FOS AT91D 450 kg.	

Available models

Full - O - Stile AT91

- FOS AT91S RILSAN[™] model corrosion proofing treated Standard RAL 7032.
- FOS AT91D RILSAN[™] model corrosion proofing treated Standard RAL 7032.

Extra Accessories and Optionals

Alternative Materials, Finishes and Custom Design

- Refer to Gunnebo Italdis S.p.A. for specific material design requirements.
- Stainless steel rotor.

Cardreader Mounting (Please refer to Gunnebo Italdis S.p.A. for feasibility)

- Integration of customer supplied readers onto the FOS casework uprights.
- Cardreader Pedestals.

Push Button Control

- MP20 remote control (COM R1 board required).
- Remote console to specific requirements.
- Casework mounted push button.

Additional Interface

- RS 485 Serial Interface

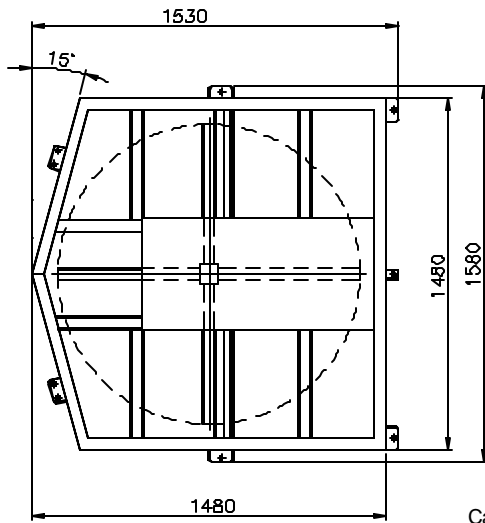
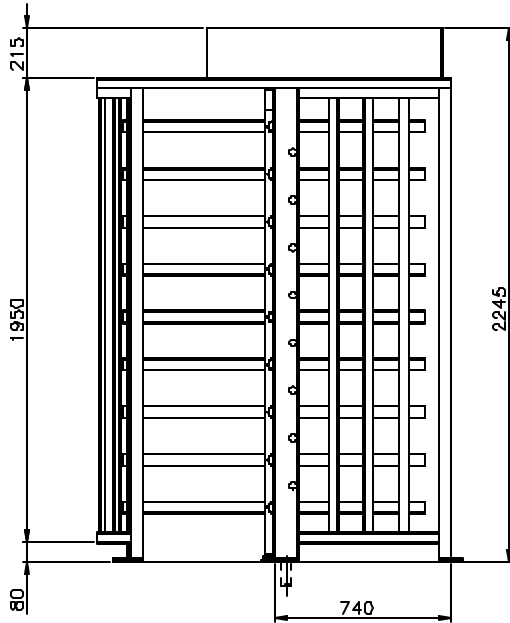
Counting

- LCD Counter
- Electro-mechanical Counter

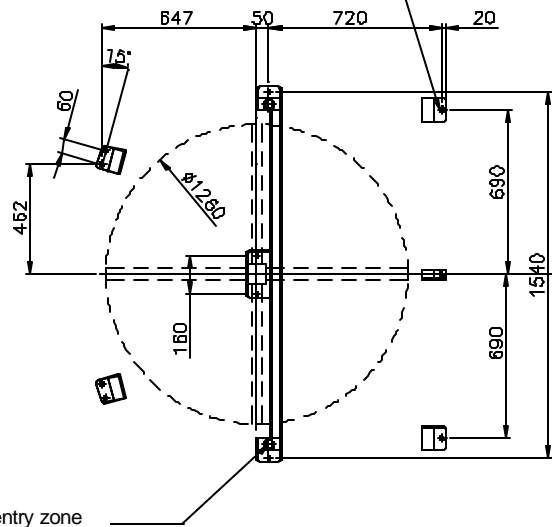
Installation Examples



FOS AT91S Site Preparation.



Anchor holes M10 bolts x 100mm deep min. (drilled during installation)



Unit in mm

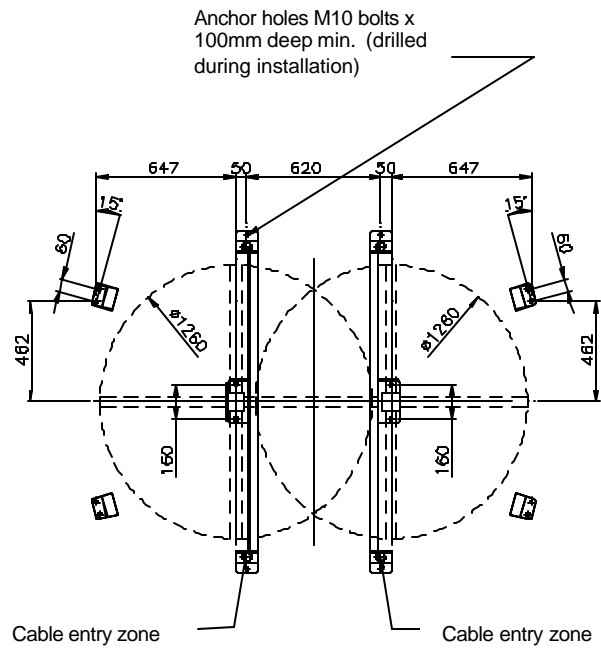
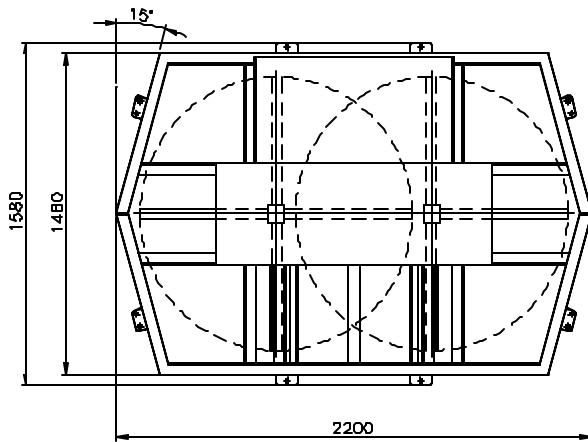
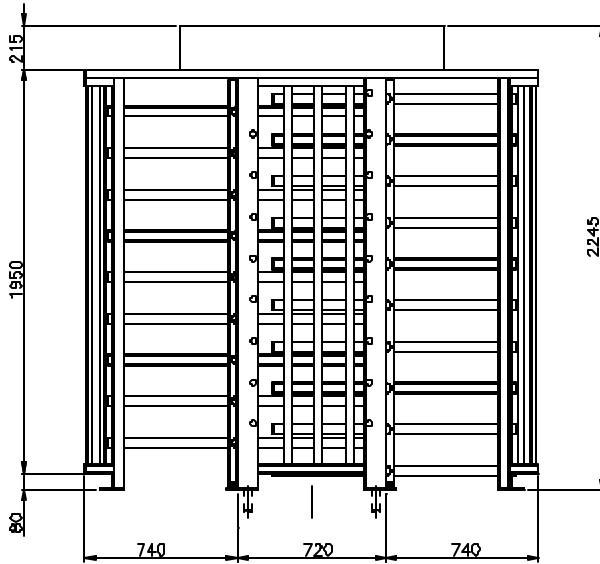
Concrete to UNI 9858, RCK250 type.
Base to be flat and level to +/- 5mm over the FOS footprint area.

Cables metal conduit, shall come up at least 50mm from foundation

IMPORTANT

- Any horizontal pipe or conduit that runs below the HiddenGtae must be at least 140mm below

FOS AT91D Site Preparation



Anchor holes M10 bolts x 100mm deep min. (drilled during installation)

Unit in mm

Concrete to UNI 9858, RCK250 type. Base to be flat and level to +/- 5mm over the FOS footprint area.

Cables metal conduit, shall come up at least 50mm from foundation

IMPORTANT

- Any horizontal pipe or conduit that runs below the HiddenGtae must be at least 140mm below

Flow Rates

Reader Device	Number per minute
Insertion type	12
Insertion type with PIN code keypad	7.5
Swipe type	15
Swipe type with PIN code keypad	8.5
Proximity 'Hands Free'	17

- Please note the figures are approximate and must be confirmed with Gunnebo Italdis SpA. Figures quoted are for one person per complete passage per walkway and per minute. It is assumed the access control authorisation response is instantaneous. Flow rates will increase with multiple passage use.



GUNNEBO ITALDIS
ENTRANCE CONTROL SOLUTIONS
ITALY

Gunnebo Italdis SpA, Via A Volta 15 - IT 38015, Lavis (TN)
Tel +39 0461 248 900 Fax +39 0461 248 999

Gunnebo Italdis SpA, Via Torri Bianche, 9 – IT 20059, Vimercate, (MI)
Tel +39 039 685 95 11 Fax +39 039 685 95 24

www.gunneboitaldis.com

Note: In pursuit of its policy of continuous refinement and improvement, Gunnebo Italdis SpA. reserves the right to modify design and details.

A COMPANY WITHIN THE GUNNEBO GROUP

HEAD OFFICE SWEDEN – Gunnebo Entrance Control AB, SE-590 93, Gunnebo.
Tel +46 (0) 490 89000, Fax +46 (0) 490 23889

DENMARK Gunnebo Protection A/S
Division Entrance Control
Erhvervsparken 3, DK -4621 Gadstrup
Tel +45 46 19 14 66
Fax +45 46 19 14 55

FRANCE Gunnebo Entrance Control SARL
Zone d'Activites Le Mandinet,
20 Rue des Campanules
F-77185, Lognes
Tel +33 (0) 1 64 80 14 40
Fax +33 (0) 1 64 80 14 39

GERMANY Gunnebo Entrance Control GmbH
Diagonalstrasse 41, D-20537
Hamburg
Tel +49 (0) 40 47 11 30 0
Fax +49 (0) 40 47 11 30 79

HONG KONG Gunnebo Entrance Control
Room 2312, C.C. Wu Building,
302-308 Hennessy Road, Wanchai.
Tel +852 2882 8337
Fax +852 2523 7880

ITALY Gunnebo Italdis SpA
Via A Volta 15 -IT 38015
Lavis (TN)
Tel +39 0461 248 900
Fax +39 0461 248 999

NORWAY Gunnebo Troax A/S
Division Entrance Control
Postboks 179, Kalbakken N-0903, Oslo
Tel. +47 22 80 42 00
Fax +47 22 80 42 01

SPAIN Gunnebo Entrance Control
BBC, Comte d'Urgel 143, lola 08036,
Barcelona
Tel +34 93 452 59 56
Fax +34 93 451 56 53

SWEDEN Gunnebo Entrance Control
Box 500, Kumla Gardsvag 33F, 145 63
Norsborg
Tel +46 (0)8 53 17 15 75
Fax +46 (0) 8 53 18 85 39

UNITED KINGDOM Gunnebo Mayor Ltd
Bellbrook Business Park, Uckfield,
East Sussex, TN22 1QQ
Tel +44 (0) 1825 761022
Fax +44 (0) 1825 763835

USA Gunnebo Omega Inc
5056 Commercial Circle, Suite E,
Concord, California, CA 94520
Tel +01 925 609 6339
Fax +01 925 603 0810